



About Us

K2 Commercial Hardware offers the finest in security, quality, styling and customer service to designers, architects and builders.

The K2 product line includes locksets, auxiliary deadbolts, exit devices and door closers to meet your commercial hardware needs.

K2 has one goal in mind – to be known as the company that is easy to do business with. K2's industry-leading frontline and support teams will make doing business easy in every respect – from products that make K2 the logical choice for architects, designers and builders, to a support system staffed by people who care.

Chamfer Design

The simplistic yet attractive chamfer design of the K2 product illustrates its superior quality as well as its style niche in the commercial hardware market. This distinctive style reflects from the K2 logo with its bold lines and beveled edges and is carried throughout the entire K2 product range.

K2 Branding

Heavy embossed K2 logo branding carries through from the product to the collateral materials, specifically to enhance the branding of our commercial hardware products. A brand soon to be recognized by the entire commercial hardware industry!

Warranty

- 1 year electrical
 - 3 year finish (*except 613)
 - Lifetime mechanical
- K2 offers one of the best warranties in the industry.

Website

K2's best in class web site has been designed from the ground up with you in mind, and features unsurpassed ease-of-use, quick links to important information, and features like these to help make your job easier:

General Features:

- Full product line with supporting image library
- Competitive cross reference
- Electronic versions of all literature
- Access to customer and technical support

Visit now and experience K2 online.

Just another way we're making it easy.



www.k2commercialhardware.com

Smartkey



EASILY RE-KEY IN 3 SIMPLE STEPS:

- 1 Insert functioning key & turn 1/4 turn clockwise.
- 2 Insert & remove the Smartkey. Learn tool. Remove functioning key.
- 3 Insert new key and turn 1/2 turn counter-clockwise. Your lock is now re-keyed!

You must have your functioning key & your Smartkey tool for the system to work.

Packaging

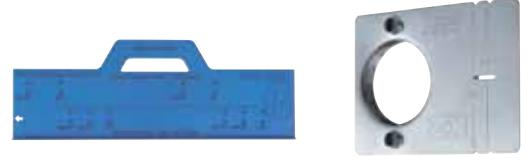
Packaging designed with you, the customer in mind.

- Compartmental footprint allows for quick and easy installation
- Improved productivity
- Clear inner tray provides quality control with all parts being visible



Jigs & Templates

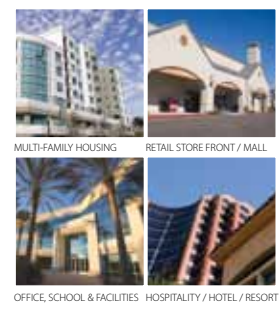
Installation jigs and templates are another reason why K2 is the easiest company to do business with.



Product Guide



"K2" is committed to delivering distinct hardware solutions, while simplifying the customer experience and being the easiest to do business with."



www.K2commercialhardware.com
19701 Da Vinci • Lake Forest, CA • 92610
866.590.2094 • 9/10 • LIT K2-1-05 • 16147

Sales Support

Our merchandising displays are a great way to show our distinctive quality designed products.



Literature

We have additional literature available:

- Architectural Sweets Guide
- Specification Sheets
- Price Book
- Competitive Cross Reference Guide
- Warranty Card

Customer Service

ph 1-866-590-2094 fax 1-866-493-4737
info@k2commercialhardware.com sales@k2commercialhardware.com



Finish Availability

Finishes



Levers & Interconnect

Series	Description	605	606	613	619	625	626
QMS/QME/QML	Grade 1, Mortise	†	†	•	†	†	•
QCL 100	Grade 1, Cylindrical	•	•	•	•	•	•
QCL 200	Grade 2, Cylindrical	•	•	•	•	•	•
QCI 200	Grade 2, Interconnect	•	•	•	†	•	•
QTL 200	Grade 2, Tubular	•	•	•	•	•	•

† Special order

Deadbolts

Series	Description	605	613	619	625	626
QDB 100	Grade 1	•	•	•	•	•
QDB 200	Grade 2	•	•	•	•	•

Exit Devices

Series	Description	605	313	626
QED 100	Heavy Duty Architectural	•	•	•
		689	690	
QED 300	Standard Duty	•	•	

Door Closers

Series	Description	689	690	696
QDC 100	Extra HD	•	•	•
QDC 200	Heavy Duty Architectural	•	•	•
QDC 300	Standard Duty	•	•	•

Leversets

Mortise QMS/QME/QML100 series

Grade 1 Mortise



QME - Escutcheon Summit



QMS - Sectional Sierra

QCL100 series

Grade 1 Cylindrical



Sierra (SIE)



Summit (SUM)

QCL200 series

Grade 2 Cylindrical



Pinnacle (PNN)



Pearce (PEA)

QTL200 series

Grade 2 Tubular



Nordic (NOR)

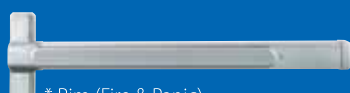


Essex (ESX)

Exit Devices

QED100 series

Heavy Duty Architectural



* Rim (Fire & Panic)

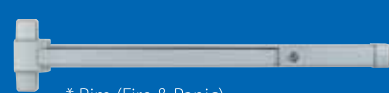
* Surface Vertical Rod (Fire & Panic)

* Less Bottom Rod (Fire & Panic)

* Concealed Vertical Rod (Fire & Panic)

QED300 series

Standard Duty



* Rim (Fire & Panic)

* Surface Vertical Rod (Fire & Panic)

* Less Bottom Rod (Fire & Panic)

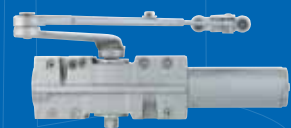
Door Closers

QDC100

Big Body

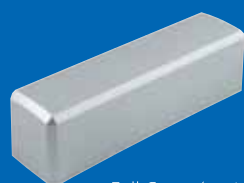


Full Cover (standard)



QDC300 series

Standard Duty

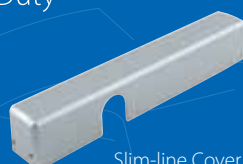


Full Cover (optional)



QDC200 series

Heavy Duty



Slim-line Cover (standard)



Full Cover (optional)

Auxiliary Deadbolts

QDB100 series/QDB200 series

Grade 1 & Grade 2



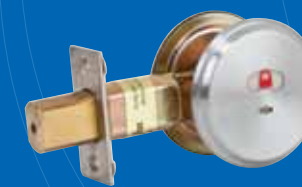
Single Cylinder
Double Cylinder
Classroom



Key Control Deadbolt
QDB288



Single Sided



Indicator QDB285

Interconnect

QCI200 series



Single Locking
Pinnacle (PNN)



Double Locking
Pearce (PEA)



Optional
Exterior Trim

Exit Device Trims

QET100 series

Heavy Duty Architectural



Heavy Duty Passage
(SIE)



Heavy Duty
Keyed (SIE)

QET300 series

Standard Duty



Standard Duty
Passage (PNN)



Standard Duty
Keyed (PNN)



Pull Plate
(Available with or
without cylinder)



Thumbpiece



Gull Wing Trim



Blank Plate

QRT300 series

Standard Duty



Standard Duty
Round Rose Trim
Pinnacle (PNN)



Standard Duty
Round Rose Trim
Pearce (PEA)