

- 1 year electrical
- 3 year finish (*except 613)
- Lifetime mechanical

K2 offers one of the best warranties in the industry.

Warranty

Heavy embossed K2 logo branding carries through from the product to the collateral materials, specifically to enhance the branding of our commercial hardware products. A brand soon to be recognized by the entire commercial hardware industry!

K2 Branding

The simplistic yet attractive charmer design of the K2 product illustrates its superior quality as well as its style niche in the commercial hardware market. This distinctive style reflects from the K2 logo with its bold lines and beveled edges and is carried throughout the entire K2 product range.

Charmer Design

K2 Commercial Hardware by Black & Decker offers the finest in security, quality, styling and customer service to designers, architects and builders. The K2 product line includes locksets, auxiliary deadbolts, exit devices and door closers to meet your commercial hardware needs. K2 has one goal in mind – to be known as the company that is easy to do business with. K2's industry-leading front-line and support teams will make doing business easy in every respect – from products that make K2 the logical choice for architects, designers and builders, to a support system staffed by people who care.

About Us

Website

K2's best in class web site has been designed from the ground up with you in mind, and features unsurpassed ease-of-use, quick links to important information, and features like these to help make your job easier:

General Features:

- Full product line with supporting image library
- Competitive cross reference
- Electronic versions of all literature
- Access to customer and technical support

Visit now and experience K2 online. Just another way we're making it easy.



www.k2commercialhardware.com

Jigs & Templates

Installation jigs and templates are another reason why K2 is the easiest company to do business with.



Packaging

Packaging designed with you, the customer in mind. • Compartmental footprint allows for quick and easy installation • Improved productivity • Clear inner tray provides quality control with all parts being visible



Sales Support

Literature

We have additional literature available: Architectural Sweets Guide, Specification Sheets, Price Book, Competitive Cross Reference Guide, Warranty Card

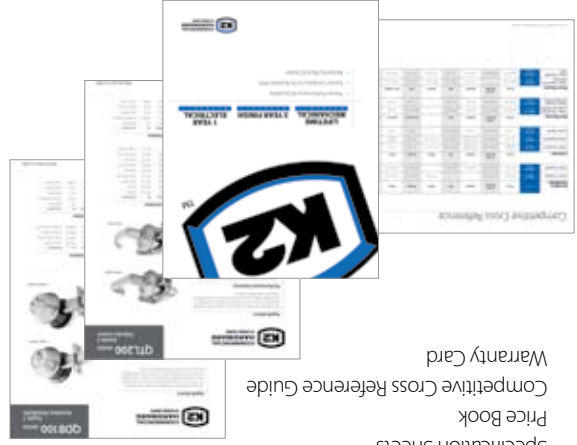
Mounts

Our merchandising displays are a great way to show our distinctive quality designed products.

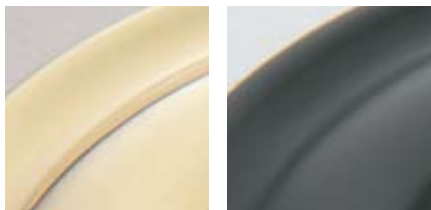


Customer Service
p 1-866-590-2094
f 1-866-493-4737

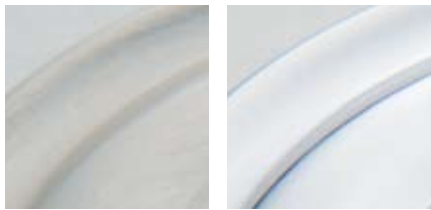
info@k2commercialhardware.com
sales@k2commercialhardware.com



Finishes



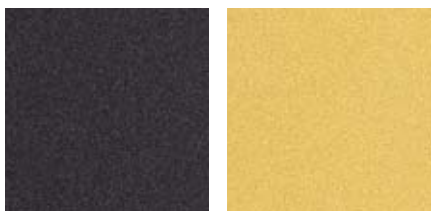
US3 Bright Brass (605) US10B Oil Rubbed Bronze (613)



US15 Satin Nickel (619) US26 Bright Chrome (625)



US26D Satin Chrome (626) 689 Aluminum



690 Statuary Bronze 696 Brass

Finish Availability

Levers & Interconnect

Series	Description	605	613	619	625	626
QCL 100	Grade 1, Cylindrical	•	•	•	•	•
QCL 200	Grade 2, Cylindrical	•	•	•	•	•
QCI 200	Grade 2, Interconnect	•	•	•	†	•
QTL 200	Grade 2, Tubular	•	•	•	•	•

† Special order

Deadbolts

Series	Description	605	613	619	625	626
QDB 100	Grade 1	•	•	•	•	•
QDB 200	Grade 2	•	•	•	•	•

Exit Devices

Series	Description	605	313	626
QED 100	Heavy Duty Architectural	•	•	•
		•	•	•
QED 300	Standard Duty	•	•	

Door Closers

Series	Description	689	690	696
QDC 200	Heavy Duty Architectural	•	•	•
QDC 300	Standard Duty	•	•	•

"K2™ is committed to delivering distinct hardware solutions, while simplifying the customer experience and being the easiest to do business with."



www.k2commercialhardware.com
19701 Da Vinci • Lake Forest, CA • 92610
866.590.2094 • 5/09 • LIT K2-1-05 • 14866

Product Guide



Leversets

QCL100 series Grade 1 Cylindrical

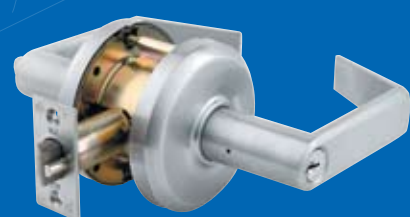


Sierra (SIE)



Summit (SUM)

QCL200 series Grade 2 Cylindrical



Pinnacle (PNN)



Pearce (PEA)

QTL200 series Grade 2 Tubular



Nordic (NOR)



Essex (ESX)

Exit Devices

QED100 series Heavy Duty Architectural



* Rim (Fire & Panic)



* Surface Vertical Rod (Fire & Panic)

* Less Bottom Rod (Fire & Panic)

* Concealed Vertical Rod (Fire & Panic)

QED300 series Standard Duty



* Rim (Fire & Panic)

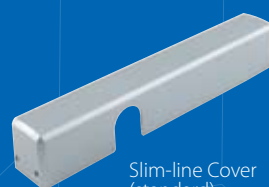


* Surface Vertical Rod (Fire & Panic)

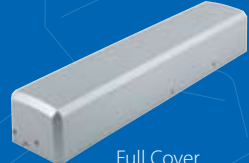
* Less Bottom Rod (Fire & Panic)

Door Closers

QDC200 series Heavy Duty



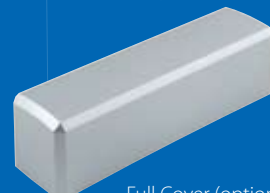
Slim-line Cover (standard)



Full Cover (optional)



QDC300 series Standard Duty

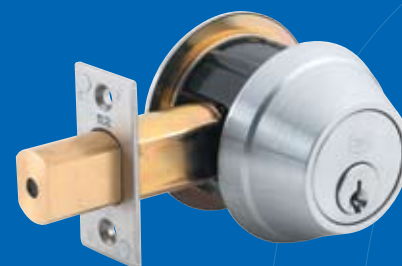


Full Cover (optional)



Auxiliary Deadbolts

QDB100 series/QDB200 series Grade 1 & Grade 2



Single Cylinder



Double Cylinder



Single Sided

Interconnect

QCI200 series



Single Locking Pinnacle (PNN)



Double Locking Pearce (PEA)



Optional Exterior Trim

Exit Device Trims

QET100 series Heavy Duty Architectural



Heavy Duty Passage (SIE)



Heavy Duty Keyed (SIE)

QET300 series Standard Duty



Standard Duty Passage (PNN)



Standard Duty Keyed (PNN)



Thumbpiece



Pull Plate (Available with or without cylinder)



Blank Plate

Gull Wing Trim

QRT300 series Standard Duty



Standard Duty Round Rose Trim Pinnacle (PNN)



Standard Duty Round Rose Trim Pearce (PEA)