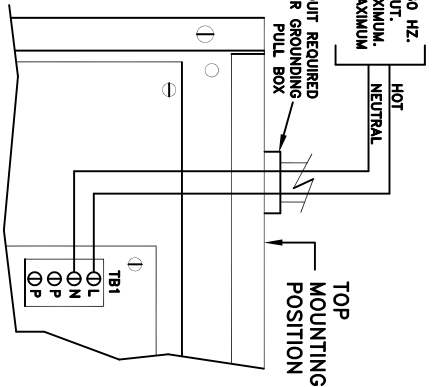
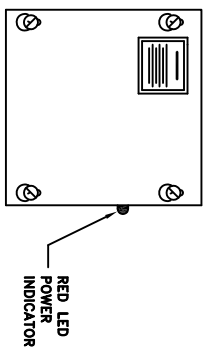


120 VAC 60 HZ.
POWER INPUT.
750MA MAXIMUM,
12 AWG MAXIMUM
WIRE SIZE.



GENERAL WIRING DIAGRAM
FOR 8000312 ELECTRIC
LATCH RETRACTION
CONTROLLER

USE INSTALLATION INSTRUCTIONS
#42859



CLASS 2 OUTPUTS

SECURITY LISTED

UL

EQUIPMENT LISTED

UL

GENERAL SIGNALING EQUIPMENT

4M73

MFG. DATE:

CONTROLLER INTENDED
FOR INDOOR USE ONLY.

USED FOR ADJUSTING UNLOCK DELAY TIME WHEN
R2 SW. 2, R4 USING MOMENTARY ACTION SWITCHES FOR SW. 1 AND
INC. INC. SW. 2, R2 ADJUSTS DEV. 1 (SINGLE DOOR) OR DEV.
1 & DEV. 2 (PAIR DOORS) TIME DELAY. R4 ADJUSTS
DEV. 2 (SINGLE DOOR) TIME DELAY. 20 SEC. MAX.
DELAY TIME.

S DEVICE ACTIVATION MODE SELECTOR
P11 DEFAULT POSITION SHOWN.
D SEE BELOW FOR DETAILS.

FA FIRE ALARM INPUT ENABLE/DISABLE SELECTOR
EN DEFAULT POSITION SHOWN WHEN FIRE ALARM
P12 IS NOT USED. TO ENABLE INPUT FOR FIRE ALARM
FA INTERFACE, MOVE JUMPER TO "FA EN" POSITION.
DIS

