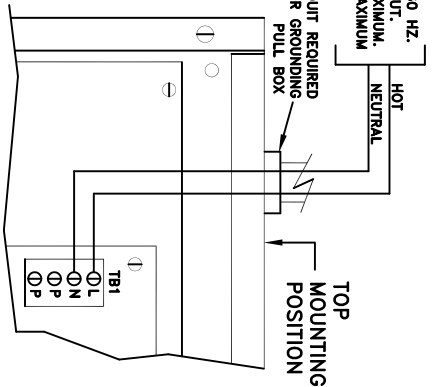
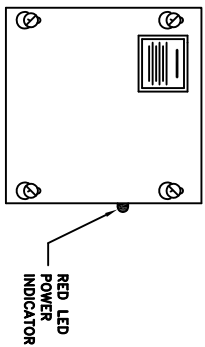


120 VAC 60 HZ.  
POWER INPUT.  
750MA MAXIMUM,  
12 AWG MAXIMUM  
WIRE SIZE.



**GENERAL WIRING DIAGRAM  
FOR 8000313 ELECTRIC  
LATCH RETRACTION  
CONTROLLER**

**USE INSTALLATION INSTRUCTIONS  
#42860**



MFG. DATE:

CLASS 2 OUTPUTS

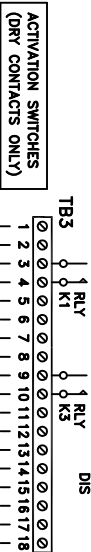


**CONTROLLER INTENDED  
FOR INDOOR USE ONLY.**

**R2** USED FOR ADJUSTING UNLOCK DELAY TIME WHEN USING A  
**R4** MOMENTARY ACTION SWITCH FOR SW. 1, R2 ADJUSTS DEV.  
1 (SINGLE DOOR) OR DEV. 1 & DEV. 2 (PAIR DOORS) TIME  
DELAY. 20 SEC. MAX. DELAY TIME. R4 IS NOT USED WITH  
THE 8000313 LATCH RETRACTION CONTROLLER.

**S** DEVICE ACTIVATION MODE SELECTOR  
JUMPER MUST REMAIN IN "S" POSITION.  
DO NOT MOVE JUMPER TO "D" POSITION.

**FA** FIRE ALARM INPUT ENABLE/DISABLE SELECTOR  
DEFAULT POSITION SHOWN WHEN FIRE ALARM  
IS NOT USED. TO ENABLE INPUT FOR FIRE ALARM  
INTERFACE, MOVE JUMPER TO "FA EN" POSITION.

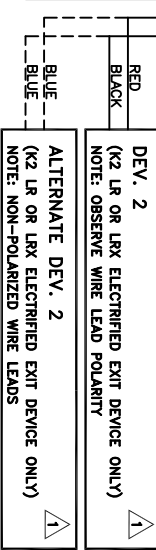
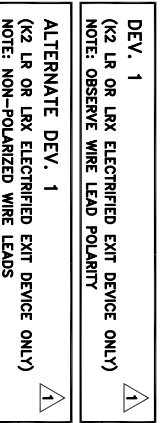


CLOSING SW. 1 ACTIVATES DEV. 1 (SINGLE DOOR) OR  
DEV. 1 AND DEV. 2 (PAIR DOORS) FOLLOWED BY  
ACTIVATION OF AUTO DOOR OPERATOR. (MOMENTARY  
SWITCH NORMALLY USED WITH THIS INPUT.)

CLOSING SW. 2 ACTIVATES DEV. 1 (SINGLE DOOR) OR  
DEV. 1 AND DEV. 2 (PAIR DOORS), WITHOUT ACTIVATING  
AUTO DOOR OPERATOR. (MAINTAIN SWITCH NORMALLY  
USED WITH THIS INPUT). NOTE: SW. 1 CAN BE USED TO  
MOMENTARILY ACTIVATE AUTO DOOR OPERATOR WHILE  
LATCHES ARE CURRENTLY HELD RETRACTED BY SW. 2.

THIS INPUT IS NOT USED WITH THE  
8000313 LATCH RETRACTION CONTROLLER

TO AUTO DOOR OPERATOR TRIGGER INPUT  
FOR USE WITH DEV. 1 (SINGLE DOOR) OR  
DEV. 1 AND DEV. 2 (PAIR DOORS)



**NOTES:**

1 DO NOT WIRE MORE THAN ONE EXIT DEVICE TO THIS  
OUTPUT (DEV. X OR ALTERNATE DEV. X, NOT BOTH).

2 DO NOT TIE THE "-" RETURN OF BOTH AUXILIARY OUTPUTS  
COMMON TO EACH OTHER. (TERMINALS 16 & 18 CANNOT BE  
CONNECTED TOGETHER.)

