



**COMMERCIAL
HARDWARE**
BY **BLACK & DECKER**

QCL100series

Grade 1 Cylindrical Leversets

Applications

The heavy duty QCL100 series cylindrical levers are designed for institutional, commercial uses such as educational, health care and industrial facilities where a long-lasting, highly durable product is required. These levers will deliver the operational requirements set forth while withstanding the physical abuse associated with the applied environment.

Performance Features

- Tested to exceed 1,000,000 cycles, exceeding the 800,000 required to meet Grade 1 certification.
- Standard clutching mechanism provides resistance to damage caused by physical force.
- Thru-bolted design and heavy-duty spring tension provides longer performance life and prevents lever sag.
- Concealed mounting screws.
- Compartmentalized packaging allows for quick and easy installation.

Certifications



- ANSI/BHMA A156.2 Series Grade 1
- ANSI A117.1 Accessibility Code (ADA Compliant)
- UL/cUL listed(3-hours) for "A" label single door applications (4' x 8')
- UL10C / UBC 7-2 (1997) Positive Pressure Rated
- UL10B Pressure Rated
- California State Reference Code (formerly Title 19 – Fire Marshall)

Product Specifications

- Handing – All QCL100 series lever locksets are non-handed.
- Door Thickness – 1 3/8" – 2" (35mm-51mm) standard.
- Backset – 2 3/4" (70mm) standard. 2 3/8" & 5" (60mm, 127mm) available.
- Exposed Trim – Pressure cast zinc, plated to match finish designation.
- Strike – ANSI strike 1 1/4" x 4 7/8" (32mm x 124mm) standard. Other strike options also available.
- Door Prep – 2 1/8" (54mm) diameter cross bore.
- Latchbolt – Keyed/Exterior 1/2" (13mm) steel; Interior 1/2" (12mm) spring latch; Latch Faceplate 1 1/8" x 2 1/4" (29mm x 57mm)

Keying

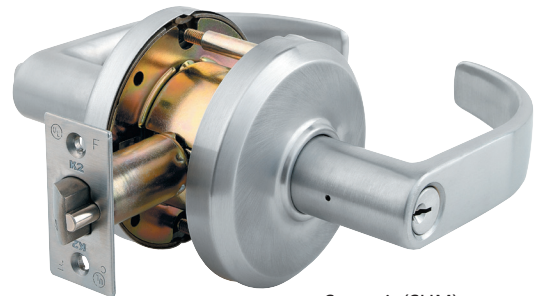
- 6-pin brass cylinders. Many keying options available from our factory to include, but not limited to, master keying, grandmaster keying and construction keying. Small Format Interchangeable Core cylinder also available.
- 2 Keys per lockset

Warranty

Lifetime Mechanical & 3 year finish*
*(613/US10B carries no finish warranty)



Sierra (SIE)



Summit (SUM)

Functions

ANSI	K2	Description
F75	QCL130	Passage
---	QCL135	Communicating
F76	QCL140	Privacy
F82	QCL150	Entry
F82	QCL151	Entry I/C
F84	QCL160	Classroom
F84	QCL161	Classroom I/C
F86	QCL170	Storeroom
F86	QCL171	Storeroom I/C
---	QCL120	Single Dummy

Finishes

BHMA	US	Description
605	US3	Bright Brass
613	US10B	Oil Rubbed Bronze
619	US15	Satin Nickel
625	US26	Bright Chrome
626	US26D	Satin Chrome