



**COMMERCIAL
HARDWARE**
BY **BLACK & DECKER**

QCL200 series Grade 2 Cylindrical Leversets

Applications

The standard duty QCL200 series cylindrical levers are designed for multi-family, tenant improvement uses such as apartment complexes, retail/storefront, office buildings, religious and government facilities and hotels/motels where a stylish yet durable product is required.

Performance Features

- Tested to significantly exceed the 400,000 cycles required to meet Grade 2 certification.
- Standard clutching mechanism provides resistance to damage caused by physical force.
- Thru-bolted design and heavy-duty spring tension provides longer performance life and prevents lever sag.
- Concealed mounting screws.
- Compartmentalized packaging allows for quick and easy installation.

Certifications



- ANSI/BHMA A156.2 Series Grade 2
- ANSI A117.1 Accessibility Code (ADA Compliant)
- UL/cUL listed (3-hours) for "A" label single door applications (4' x 8')
- UL10C / UBC 7-2 (1997) Positive Pressure Rated
- UL10B Pressure Rated
- California State Reference Code (formerly Title 19 – Fire Marshall)

Product Specifications

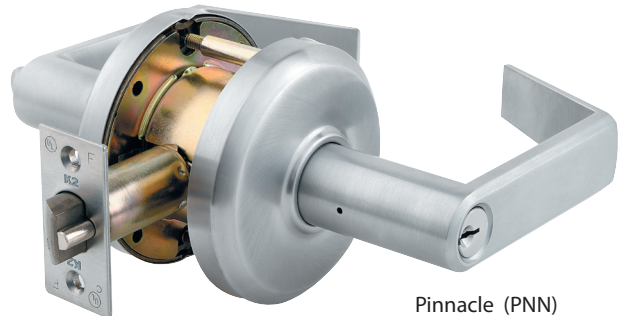
- Handing – All QCL200 series lever locksets are non-handed.
- Door Thickness – 1^{3/8"} – 2" (35mm-51mm) standard.
- Backset – 2^{3/4"} (70mm) standard.
2^{3/8"}, 3^{3/4"} & 5" (60mm, 95mm, 127mm) available.
- Exposed Trim – Pressure cast zinc plated to match finish designation.
- Strike – ANSI strike 1^{1/4"} x 4^{7/8"} (32mm x 124mm) standard.
Other strike options also available
- Latchbolt – Keyed/Exterior 1/2" (13mm) steel throw;
Interior 1/2" (12mm) spring latch;
- Latch Faceplate 1^{1/8"} x 2^{1/4"} (29mm x 57mm)
- Door Prep – 2^{1/8"} (54mm) diameter cross bore.

Keying

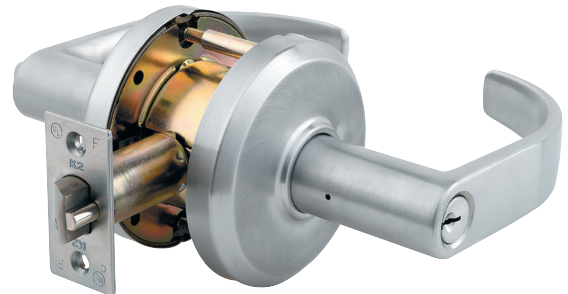
- 6-pin brass cylinders. Many keying options available from our factory to include, but not limited to, master keying, grandmaster keying and construction keying. Small Format Interchangeable Core cylinder also available.
- 2 Keys per lockset

Warranty

Lifetime Mechanical & 3 year finish*
*(613/US10B carries no finish warranty)



Pinnacle (PNN)



Pearce (PEA)

Functions

ANSI	K2	Description
F75	QCL230	Passage
---	QCL235	Communicating
F76	QCL240	Privacy
F82	QCL250	Entry
F82	QCL251	Entry I/C
F84	QCL260	Classroom
F84	QCL261	Classroom I/C
F86	QCL270	Storeroom
F86	QCL271	Storeroom I/C
---	QCL220	Single Dummy

Finishes

BHMA	US	Description
605	US3	Bright Brass
613	US10B	Oil Rubbed Bronze
619	US15	Satin Nickel
625	US26	Bright Chrome
626	US26D	Satin Chrome