



**COMMERCIAL
HARDWARE**
BY **BLACK & DECKER**

QTL200 series

Grade 2 Tubular Leversets

Applications

The standard duty QTL200 series tubular levers are designed for multi-family, tenant improvement uses such as apartment complexes, retail/store front, office buildings, religious and government facilities and hotels/motels where a stylish yet durable product is required.

Performance Features

- Tested to significantly exceed the 400,000 cycles required to meet Grade 2 certification.
- Heavy-duty torsion springs provide longer performance life and prevents lever sag.
- Concealed mounting screws.
- "Anti-Lockout" feature. The entry function will have a free interior. If the door is locked from the inside, it will unlock with the push of the interior side of the lever only or the turn of the button.
- ½" latch bolt made of stainless steel black powder metallurgy for enhanced durability and strength.
- Compartmentalized packaging allows for quick and easy installation.

Certifications



- ANSI/BHMA A156.2 Series Grade 2
- ANSI A117.1 Accessibility Code (ADA Compliant)
- UL/cUL listed (3-hours) for "A" label single door applications (4' x 8')
- UL10C / UBC 7-2 (1997) Positive Pressure Rated
- UL10B Pressure Rated
- California State Reference Code (formerly Title 19 – Fire Marshall)

Product Specifications

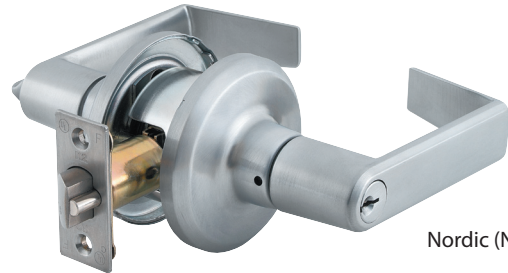
- Handing – All QTL200 series lever locksets are non-handed.
- Door Range – 1^{3/8"} - 1^{3/4"} (35mm-45mm) standard. Consult factory for special door ranges.
- Backset – Universal backset standard, will fit either 2^{3/8"} or 2^{3/4"} backsets (60mm - 70mm).
- Exposed Trim – Pressure cast zinc plated to match finish designation.
- Strike – Full-lip strike standard (57mm x 44.4mm). Other strike options also available.
- Latchbolt - 1/2" (13mm) steel throw.
- Latch Faceplate - 1" x 2^{1/4"} (25.4mm x 57mm).

Keying

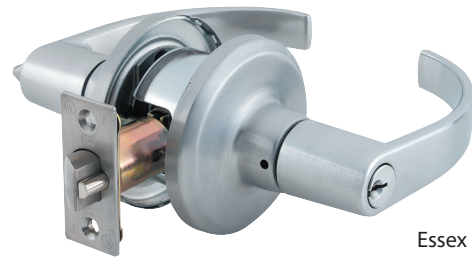
- 6-pin brass cylinders. Many keying options available from our factory to include, but not limited to, master keying, grandmaster keying and construction keying. Small Format Interchangeable Core cylinder also available.
- 2 Keys per lockset

Warranty

Lifetime Mechanical & 3 year finish*
*(613/US10B carries no finish warranty)



Nordic (NOR)



Essex (ESX)

Functions

ANSI	K2	Description
F75	QTL230	Passage
F76	QTL240	Privacy
F82	QTL250	Entry
F82	QTL251	Entry I/C
F84	QTL260	Classroom
F84	QTL261	Classroom I/C
F86	QTL270	Storeroom
F86	QTL271	Storeroom I/C
---	QTL220	Single Dummy

Finishes

BHMA	US	Description
605	US3	Bright Brass
613	US10B	Oil Rubbed Bronze
619	US15	Satin Nickel
625	US26	Bright Chrome
626	US26D	Satin Chrome