



**COMMERCIAL  
HARDWARE**  
BY **BLACK & DECKER**

# QCL200 series Grade 2 Cylindrical Levers

## Applications

The standard duty QCL200 series cylindrical levers are designed for multi-family, tenant improvement uses such as apartment complexes, retail/store-front, office buildings, religious and government facilities and hotels/motels where a stylish yet durable product is required.

## Performance Features

- Tested to significantly exceed the 400,000 cycles required to meet Grade 2 certification.
- Standard clutching mechanism provides resistance to damage caused by physical force.
- Thru-bolted design and heavy-duty spring tension provides longer performance life and prevents lever sag.
- Concealed mounting screws.
- Compartmentalized packaging allows for quick and easy installation.

## Certifications



- ANSI/BHMA A156.2 Series Grade 2
- ANSI A117.1 Accessibility Code (ADA Compliant)
- UL/cUL listed (3-hours) for "A" label single door applications (4'x 8") (1.219mt x 2.438mt)
- UL10C / UBC 7-2 (1997) Positive Pressure Rated
- UL10B Pressure Rated
- California State Reference Code (formerly Title 19 – Fire Marshall)

## Product Specifications

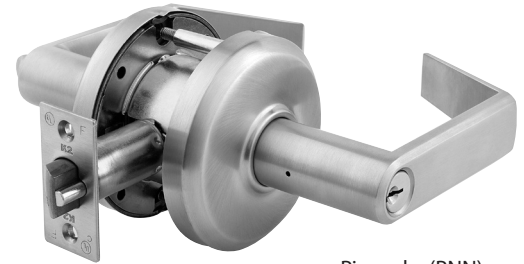
- Handing – All QCL200 series lever locksets are non-handed.
- Door Thickness – 1 3/8" – 2" (35mm-51mm) standard.
- Backset – 2 3/4" (70mm) standard.  
2 3/8", 3 3/4" & 5" (60mm, 95mm, 127mm) available.
- Exposed Trim – Pressure cast zinc plated to match finish designation.
- Strike – ANSI strike 1 1/4" x 4 7/8" (32mm x 124mm) standard.  
Other strike options also available
- Latchbolt – Keyed/Exterior 1/2" (13mm) steel throw;  
Interior 1/2" (12mm) spring latch;
- Latch Faceplate 1 1/8" x 2 1/4" (29mm x 57mm)
- Door Prep – 2 1/8" (54mm) diameter cross bore.

## Keying

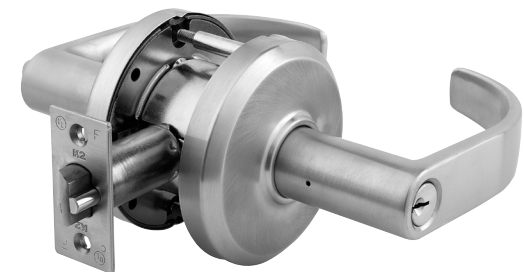
- 6-pin brass cylinders. Many keying options available from our factory to include, but not limited to, master keying, grandmaster keying and construction keying. Small Format Interchangeable Core cylinder also available.
- 2 Keys per lockset
- Offered with the following keyway options: KW-Kwikset, WE-Weiser, SC-Schlage, GA-Yale, LA-Sargent, BF-Best "F" & LC-Less Cylinder.

## Warranty

Lifetime Mechanical & 3 year finish\*  
\*(613/US10B carries no finish warranty)



Pinnacle (PNN)



Pearce (PEA)

## Functions

ANSI	K2	Description
---	QCL220	Single Dummy
F75	QCL230	Passage
F111	QCL235	Communicating
F76	QCL240	Privacy
F109	QCL250	Entry/Office
F109	QCL251	Entry Office SFIC
F84	QCL260	Classroom
F84	QCL261	Classroom SFIC
F86	QCL270	Storeroom
F86	QCL271	Storeroom SFIC

## Finishes

BHMA	US	Description
605	US3	Bright Brass
613	US10B	Oil Rubbed Bronze
619	US15	Satin Nickel
625	US26	Bright Chrome
626	US26D	Satin Chrome